

INVITATION & PROGRAMME

FIS – FESA

CONTINENTAL CUP FINAL



15 – 16 – 17 March 2024

TOBLACH | DOBBIACO

Welcome to Toblach / Dobbiaco, Italy

On behalf of the organising committee Sport OK Toblach/Dobbiaco I would like to welcome all athletes, coaches, support staff and fans to the **FIS FESA CONTINENTAL CUP**, which will take place in **Toblach/Dobbiaco** on **15th, 16th and 17th March 2024!** The organising committee and the numerous volunteers will do their best to ensure once again a cross-country festival from any point of view!

I wish all participants good luck and success in the competitions, as well as a pleasant stay in Toblach/Dobbiaco, the heart of the 3 Zinnen Dolomites cross-country skiing region!



Gerti Taschler
President Sport OK

ASV Sport OK Toblach
Nordic Arena
Seeweg 16, 39034 Dobbiaco (BZ)
Tel.: +39 0474 976 000
info@worldcup-dobbiaco.it

Deadlines

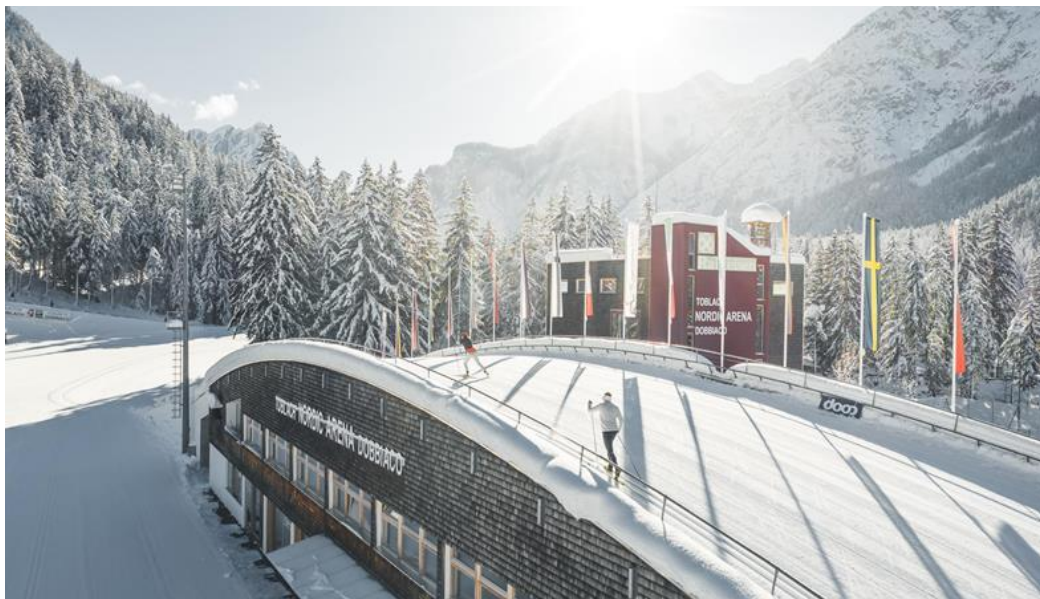
- **7th March 2024:** accommodation request
- **11th March 2024:** competition entries

We kindly ask you to confirm upon reception of this invitation if you intend to participate or not so that we have an idea of the number of nations attending and plan accommodation and competition facilities accordingly.

Venue

All competitions will take place at the Cross-Country World Cup stadium **Nordic Arena Toblach/Dobbiaco**.

GPS coordinates: 46°43'06.8"N 12°13'22.5"E



How to arrive to Toblach / Dobbiaco

Arrival by plane

The only South Tyrolean airport Bolzano Dolomites is situated in the country's capital of Bolzano / Bozen, approx. 100 km from Toblach / Dobbiaco.

Other international airports in the vicinity are Munich (D) – 330 km, Innsbruck (A) – 130 km, Salzburg (A) – 270 km, Venice (I) – 190 km, Treviso (I) – 170 km, Verona (I) – 250 km, Bergamo (I) – 330 km, Milano Malpensa (I) – 420 km.

Arrival by car

On the Brennero Motorway A22 (toll road) take exit Brixen / Bressanone – Val Pusteria, then continue on the national road (SS49-E66) to Toblach/Dobbiaco. Distance from motorway exit Brixen / Bressanone – Val Pusteria: approx. 60 km.

Please note: All Italian motorways are toll roads, Austrian motorways can only be used with a toll sticker (Vignette).

Information on the Brennero motorway A22: International tel. 0043 512 4020, in Italy tel. 800 279 940

You can also get to us via **Lienz in East Tyrol (A)**, by crossing the Austrian-Italian border on national road (B100-E66). Travel from Southern Germany via the Felbertauernstraße road. Advantage: no toll stickers (Vignettes) required

Road conditions and traffic information centre Bolzano / Bozen:

<https://verkehr.provinz.bz.it/default.asp>

phone +39 0471 200198

Visas

If an entry visa is required for entering Italy, please do not forget to apply for visa in advance. Teams are responsible to arrange for visas if required.

LOC will gladly assist you with providing the team with an invitation for the visa application, just send a complete list with full name, date of birth and passport number to info@worldcup-dobbiaco.it

Accommodation

Accommodation is only booked through the **organizing committee**. In order to meet your accommodation requirements, we invite you to send your booking requests on **the enclosed booking form as soon as possible and not later than 7th March**.

Inquiries must be send to the following contact:

e-mail: office@worldcup-dobbiaco.it tel.: +39 0474 976 000

Once we get your request, we will come back to you with the information about your accommodation. Please note that accommodation reservations **are binding and not refundable after 11th March**.

Competition programme

Thursday 14.03.2024	09:30 – 11:30 09:00 – 17:00 18:00	Official training All courses open for training Team captain's meeting – Nordic Arena, 2 nd floor
Friday 15.03.2024	09:00 11:00 18:00	Sprint CLASSIC Qualification (track 1.3 km) Sprint CLASSIC Finals (track 1.3 km) Team captain's meeting – Nordic Arena, 2 nd floor
Saturday 16.03.2024	09:00 18:00	10 km Interval FREE (track 5.0 km) Team captain's meeting – Nordic Arena, 2 nd floor
Sunday 17.03.2024	09:00 11:00	4 x 7,5 km Relay FREE (track 3,75 km) 4 x 7,5 km Relay FREE - JUN (track 3,75 km)

Prize giving ceremony: in the stadium, right after the race

Definitive programme to be confirmed every day during the TCM.

Entries

Entries deadline: 11th March 2024

- Please send intention of participation as soon as possible.
- All entered athletes must have valid FIS Codes.
- According to ICR. Art. 313, entries must be made online on <http://results.racetime.pro/registration-service>. Each FESA nation will receive login codes from Race Time Pro.

All other national federations can enter their athlete via the official FIS entry form.

- Entry fee for FESA Core and new members is 15,00 € per competition for athletes over the quota.

For competitors from FESA nations there will be no entry fee. For all other competitors there will be an entry fee of Euro 25.- per athlete and per competition.

- Contact: Sport OK Toblach, +39 0474 976 000 | info@worldcup-dobbiaco.it

Rules

The FIS-ICR - FIS CC and FESA Rules 2023/2024 apply.

Fluor forbidden

FIS Article 222.8: The use of fluorinated wax or wax products containing fluorine is prohibited for all FIS disciplines and levels. Fluorinated wax can be a competitive advantage and its use in competition leads to disqualification. It is the responsibility of the respective team to ensure compliance with the FIS-ICR.

Fluor ban:

ICR: 222.8 Fluorinated ski wax prohibition. Use of fluorinated wax or tuning products containing fluorine is prohibited for all FIS disciplines and levels. Fluorinated wax can be a competitive advantage and its use in competition will result in disqualification. (see competition rules and equipment specifications.) It is the responsibility of the respective team to ensure compliance with the FIS-ICR.

Directory

Organizing Committee SPORT OK TOBLACH | DOBBIACO

President	Gerti Taschler
Chief of competition	Martin Schwingshackl
Race office	Julian Brunner
Accommodation/Administration	Sarah Dapoz

Jury

TD FIS	TBD
TD assistant	TBD
Chief of competition	Martin Schwingshackl
Coordinator FESA	Bernd Raupach

Race Office

The Race Office will be at the 2nd floor of the Nordic Arena Toblach/Dobbiaco and open as follows:

Thursday, 14.03.2024 / 14:00 – 19:00

Friday, 15.03.2024 / 07:30 – 19:00

Saturday, 16.03.2024 / 07:30 – 19:00

Sunday, 17.03.2024 / 07:30 – 16 :00

Official Information

All information will be promptly announced on the OC website www.worldcup-dobbiaco.it

Prizes

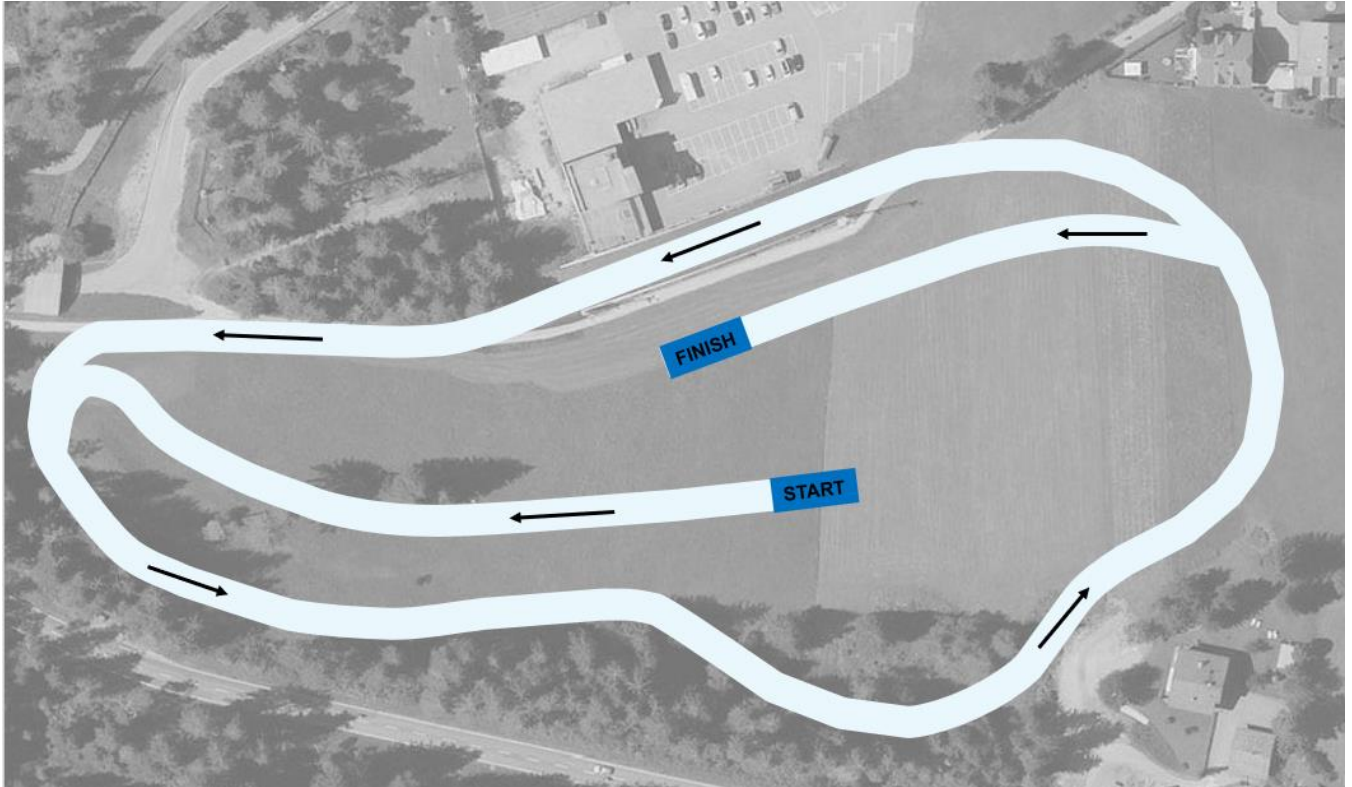
Top 3 ranked athletes will be rewarded in each category.

Insurance Liability

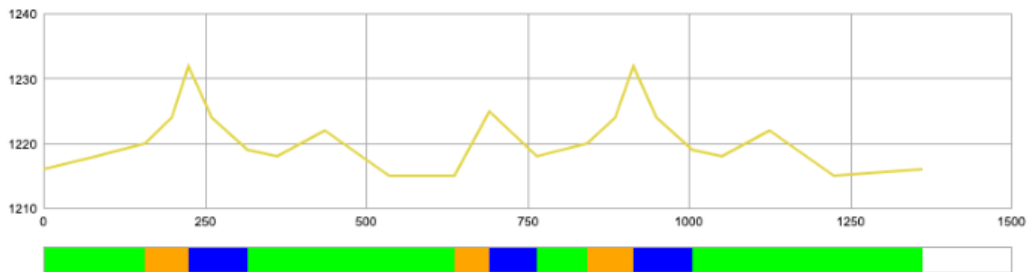
The Organizer will have liability insurance according to ICR art 212.1. – 212.2. All participating athletes must have a valid accident insurance according to ICR art. 212.4. All athletes compete at risk of their National Ski Association. The Organizer does not take any other responsibilities than described above.

Race Courses

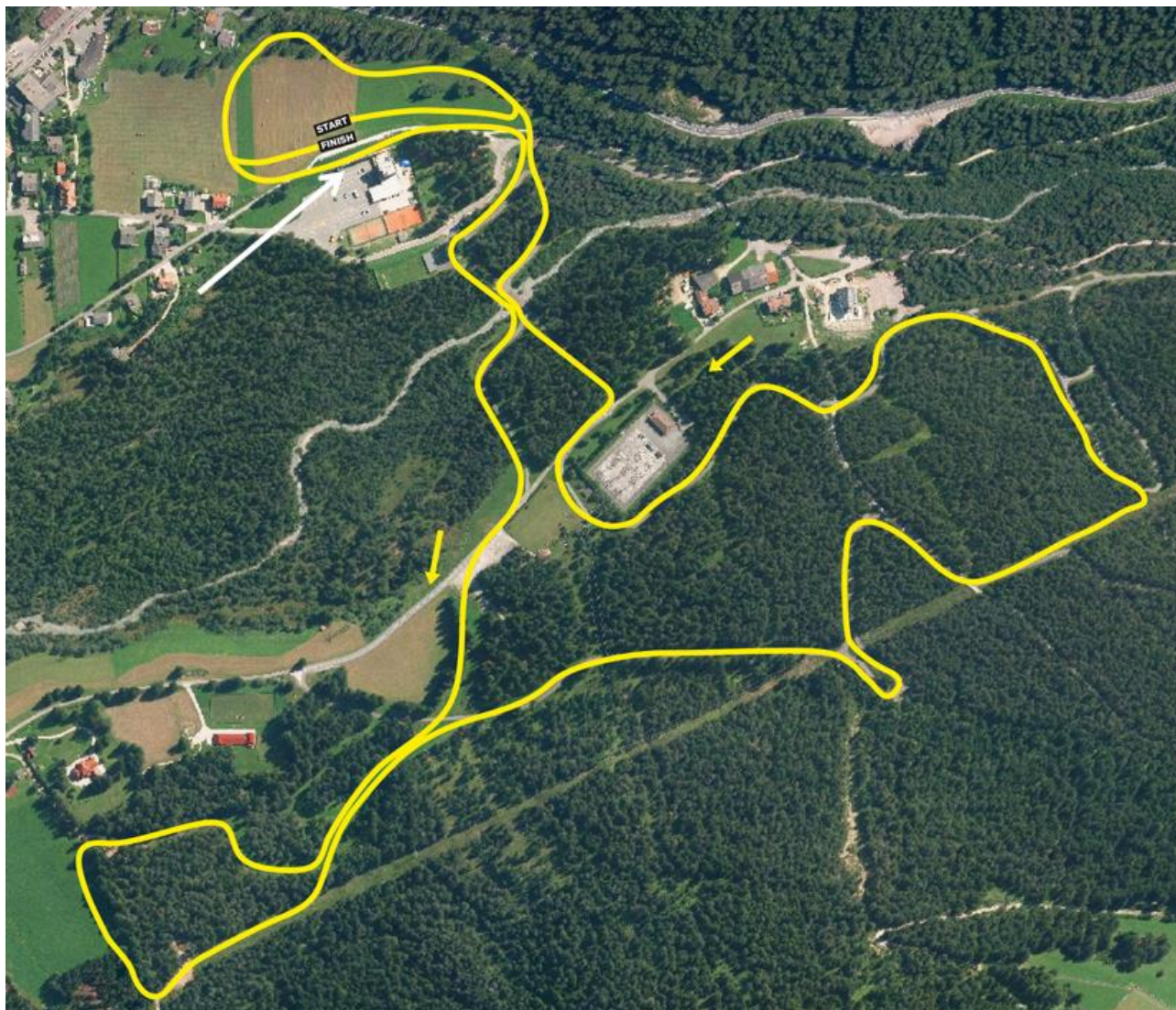
Track 1.3 km (sprint course) WC23/16.01/1.3



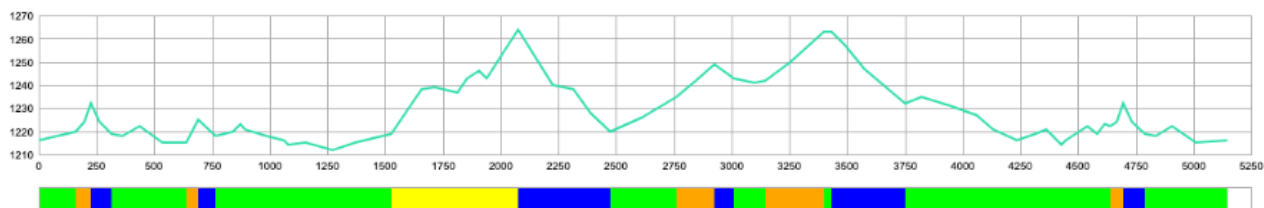
Course length:	1,362m	Height difference (HD):	17m	Lowest point:	1,215m
Course category:	D	Maximum climb (MC):	12m	Highest point:	1,232m
		Total climb (TC):	49m		



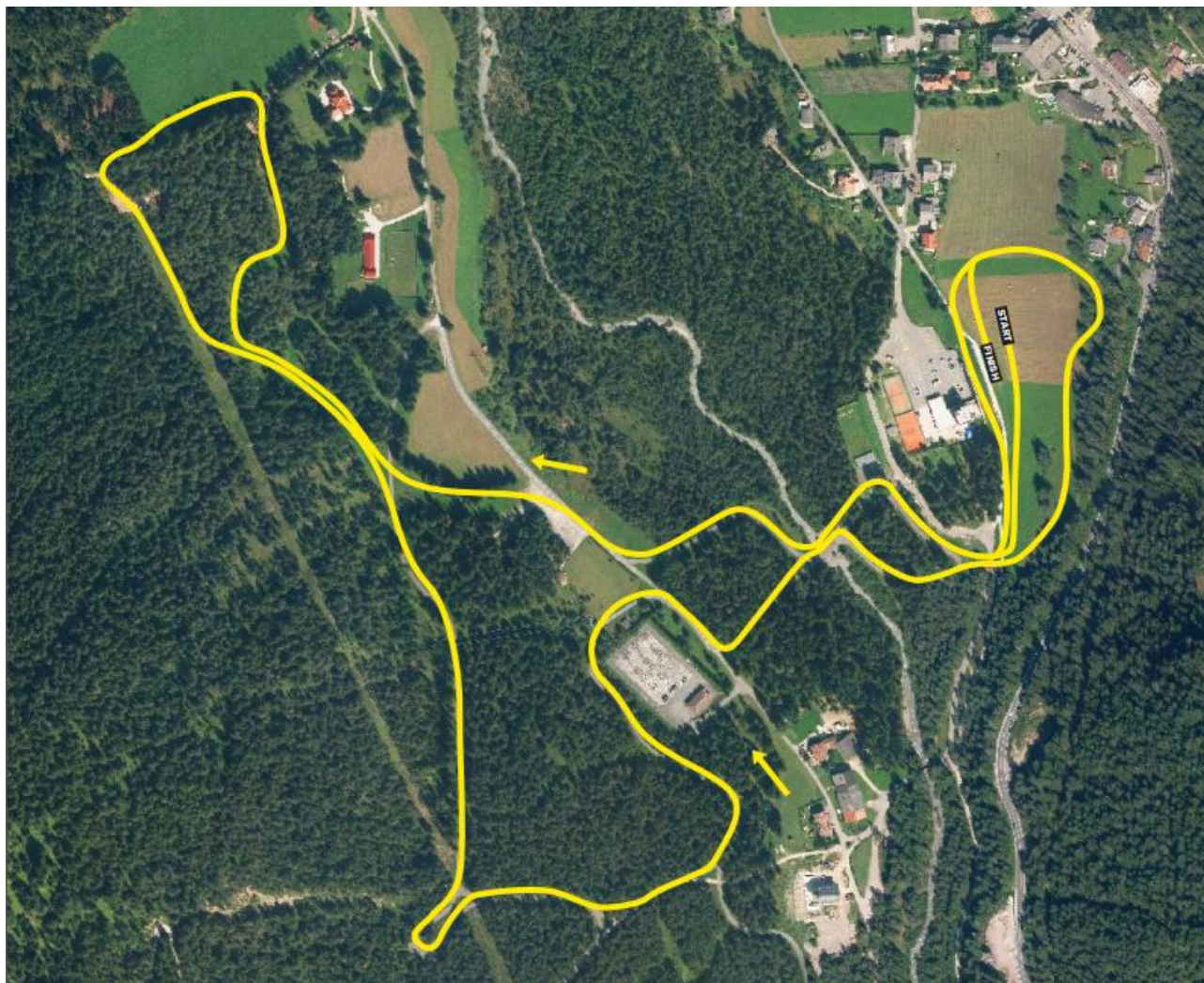
Track 5.0 km WC23/16.04/5.0



Course length:	5,146m	Height difference (HD):	52m	Lowest point:	1,212m
Course category:	D	Maximum climb (MC):	50m	Highest point:	1,264m
		Total climb (TC):	179m		



Track 3.75 km WC23/16.03/3.75



Course length:	3,996m	Height difference (HD):	52m	Lowest point:	1,212m
Course category:	D	Maximum climb (MC):	50m	Highest point:	1,264m
		Total climb (TC):	137m		

